

Family Block of the Month: Baskets

Block 3

10" finished block--**July**

Cutting:

Background:

Cut (1) 2 1/2" square.

Cut (3) 3" squares.

Cut (2) 2 1/2" x 6 1/2" rectangles.

Cut (1) 4 1/2" square.

Cut (1) 6 1/2" square.

Basket:

Cut (1) 2 1/2" square (green).

Cut (1) 3" square (green).

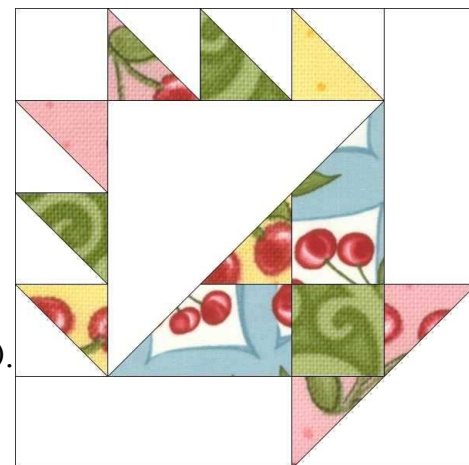
Cut (1) 3" square (pink).

Cut (1) 3" squares (yellow).

Cut (1) 2 1/2" square (yellow).

Cut (2) 2 1/2" x 4 1/2" rectangles (blue).

Cut (2) 2 1/2" squares (pink).



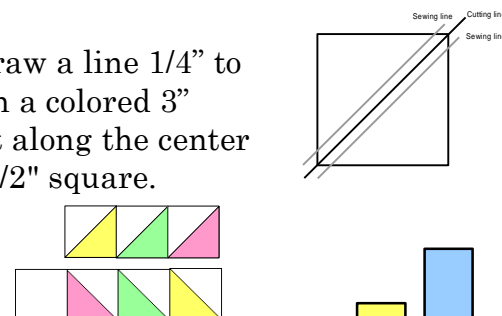
Sewing:

Handle

Draw a diagonal line on the back of each 3" background square, then draw a line 1/4" to each side. These are the sewing lines. Pair each background square with a colored 3" square. With right sides together, sew along the two outer line, then cut along the center line. Press to the dark to form (6) half square triangle units. Trim to 2 1/2" square.

Sew together to form two sets for the handles (watch the order!).

Sew the 2 1/2" background square to the colored side of one of the sets.



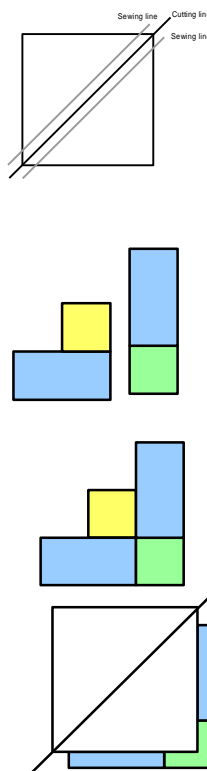
Body

Sew 2 1/2" (green) square to the end of one of the 2 1/2" x 5" (blue) rectangles.

Sew 2 1/2" (yellow) square to the SIDE of one of the 2 1/2" x 4 1/2" (blue) rectangles, lining them up so the edges are even.

Sew these two pieces together as if they were a four patch, with tails hanging off both sides.

Draw a diagonal line on the back of the 6 1/2" background square (JUST ONE!). Match the square with the four patch with tails so the diagonal line runs from blue corner to blue corner. Sew on the diagonal line, then trim to a 1/4" seam. Press to the pieced section.



Base

Sew the 2 1/2" (pink) squares to the end of each of the 2 1/2" x 6 1/2" background rectangles. Press to the background - this will help in the final step!



Basket Assembly

Sew the shorter handle piece to one side of the body, making sure the half square triangles are going the right direction.

Sew the longer handle piece to the other side, lining up your seam intersection where it meets the other handle piece.

Sew the two base rectangle/square segments to either side of the basket.

Draw a diagonal line on the back of the 4 1/2" square. Align the diagonal with the corners of the (pink) squares that form the base of the basket. This is where pressing to the background helps - you need to line up with the edge of the square in the seam allowance. Sew on the diagonal line

(be careful to match the seam intersection point on the other side!) and trim to a 1/4" seam. Press to the background if it's dark enough to hide the colored fabrics, otherwise press to the colors.

