



BLOCK OF THE MONTH THIMBLE in my STASH MARCH 2013

1/4" seam allowance



MAKE ONE

block size 6 1/2" x 6 1/2"

Thimble portion

- A cut one Template A
- B cut one Template B (background)
- B cut one Template B reversed (background)
- C cut one 4" x 3/4"
- D cut one 3 1/2" x 1"
- E cut two 3/4" x 1" (background)
- F cut one 4" x 3/4"

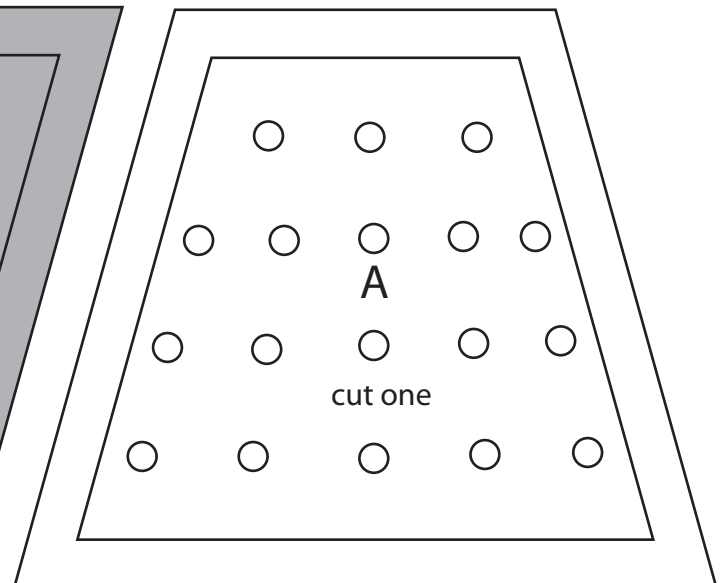
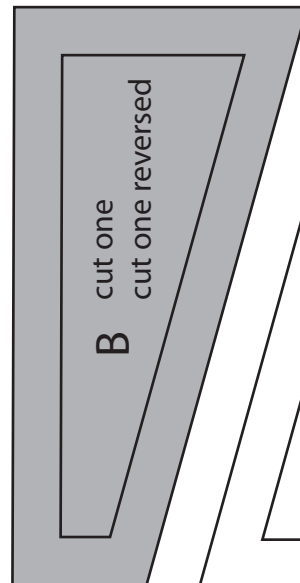
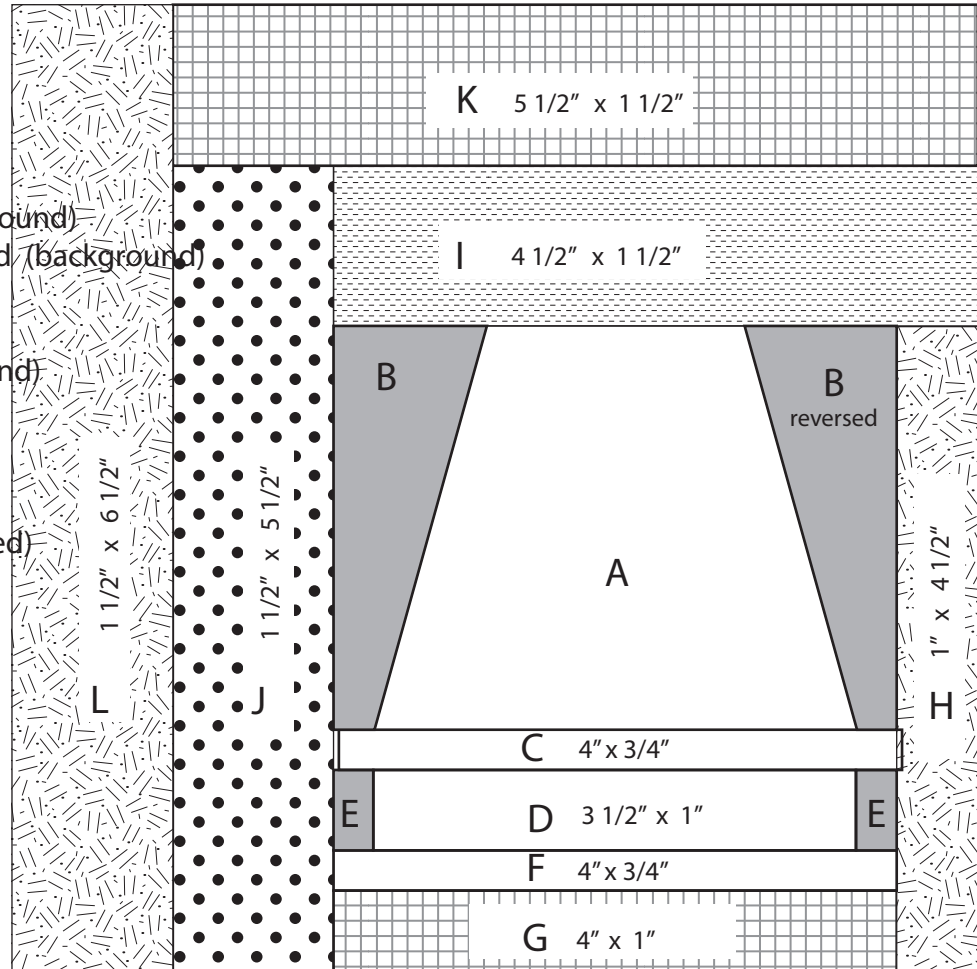
Stash logs

(each may be different, or mixed)

- G cut one 4" x 1"
- H cut one 1" x 4 1/2"
- I cut one 4 1/2" x 1 1/2"
- J cut one 1 1/2" x 5 1/2"
- K cut one 5 1/2" x 1 1/2"
- L cut one 1 1/2" x 6 1/2"

1. Sew B to A, press towards A
2. Sew reversed B to A, press towards A
3. Sew C to BAB, press towards C
4. Sew E to both ends of D, press towards D
5. Sew EDE to BABC, press towards C
6. Sew F to BABCDE, press towards F
7. Sew G to BABCDE, press towards F
8. Sew H to BABCDE, press towards H
9. Sew I to BABCDE, press towards I
10. Sew J to ABCDE, press towards J
11. Sew K to BABCDE, press towards K
12. Sew L to BABCDE, press towards L

13. Optional: Trace dots to thimble with permanent pen. Test on fabric first.



Questions???

Judy Lawry
Odette Osantowski
Nancy Ota

judylawry@gmail.com
odetteoo@cox.net
nancy@nancyota.com

348-0168
489-9639
498-4243