



## BLOCK OF THE MONTH

2021-2022

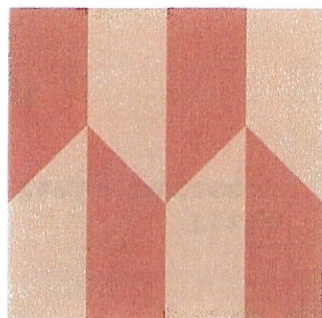
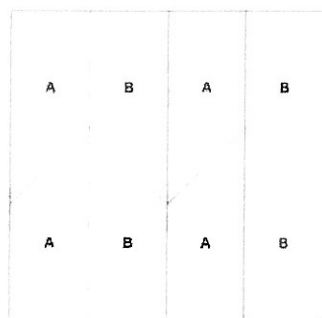
Blocks #9 6x6 & 6x6

### WHAT YOU'LL NEED

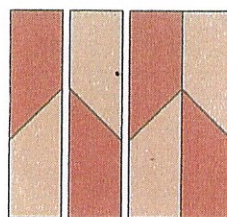
For fabric choices refer to the block diagram

**A:** 4 rectangles  $4\frac{1}{4}" \times 2"$

**B:** 4 rectangles  $4\frac{1}{4}" \times 2"$



2. In the same manner layer a dark B rectangle onto a light B rectangle, changing direction of marking line. Make two B/B strips, measuring  $6\frac{1}{2}" \times 2"$ .

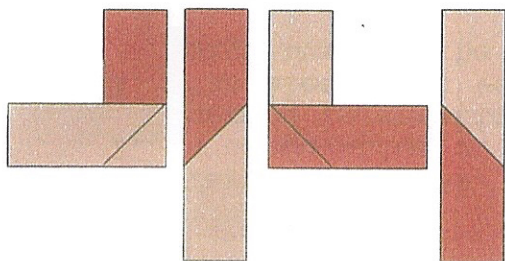
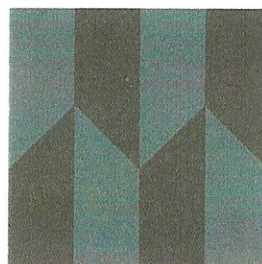


3. Arrange all four strips as shown and join strips to complete the block. Block measures  $6\frac{1}{2}" \times 6\frac{1}{2}"$ .

### ALTERNATIVE COLOR WAY

### ASSEMBLY

1. Referring to BASIC INSTRUCTIONS stitch and flip technique layer a light A rectangle perpendicular onto a dark A rectangle as shown. Note direction of marking line. Sew together to one long  $6\frac{1}{2}" \times 2"$  strip. Make two A/A strips.



HAVE FUN!

Need Help? Call: Holly Betz 949-360-9369 or Judy Kamman 949-582-8140

# BLOCK OF THE MONTH

2021-2022

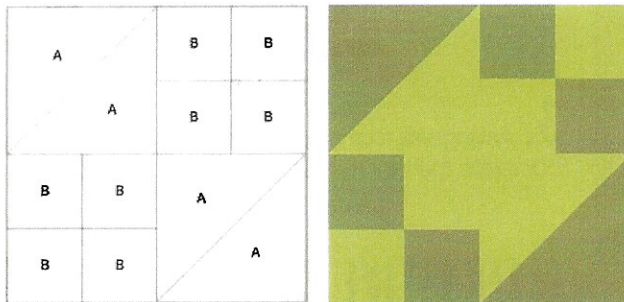
## Block 2 of 2

### WHAT YOU'LL NEED

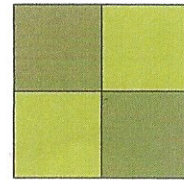
For fabric choices refer to the block diagram

**A:** 2 squares  $3\frac{7}{8}" \times 3\frac{7}{8}"$

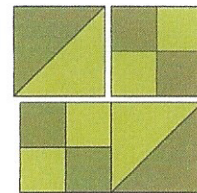
**B:** 8 squares  $2" \times 2"$



2. Arrange four B squares to make a four patch. Make a total of two 4-patch units, measuring  $3\frac{1}{2}"$  square.

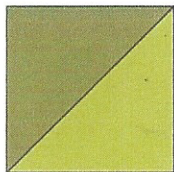


3. Arrange 4-patch units and half-square-triangle-units into two rows. Sew the units into rows and press. Join the rows and press to complete the block. Block measures  $6\frac{1}{2}" \times 6\frac{1}{2}"$ .

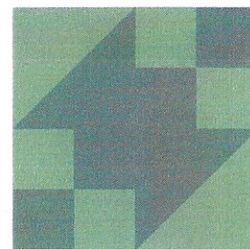


### ASSEMBLY

1. Referring to BASIC INSTRUCTIONS half-square-triangles layer a light and a dark A square. Make a total of two half-square-triangle-units. Trim the units to  $3\frac{1}{2}"$  square



### ALTERNATIVE COLOR WAY



HAVE FUN!

Need Help? Call: Holly Betz 949-360-9369 or Judy Kamman 949-582-8140